

**NEW!**

**TRACON**  
ELECTRIC®



## **LSLSB40W**

Solar street light with  
adjustable solar panel

## **LSPL25W**

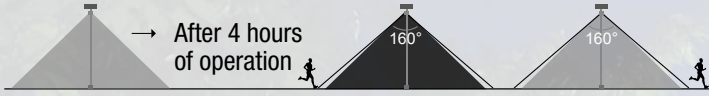
Solar park  
lighting

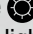


# LSLSB40W - Solar LED street light with motion sensor

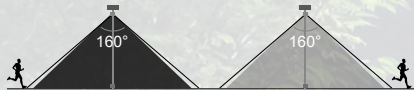
Rated power <b>40 W</b>	Light intensity <b>5.200 lm</b>	Color temperature <b>4.000 K</b>	 L×W×H (mm) <b>712×187×91</b>	 L×W×H (mm) <b>615×498×25</b>
----------------------------	------------------------------------	-------------------------------------	---	---


## Constant lighting mode

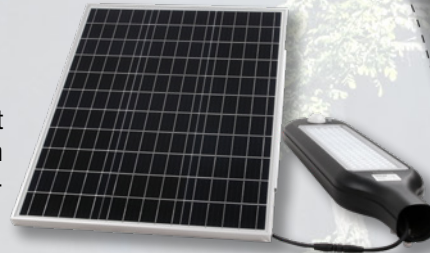


Press the  button on the remote control, the lamp will switch to the default Constant lighting mode: it will automatically turn on at night and operate at 60% brightness for 4 hours, then switch to Sensor mode.

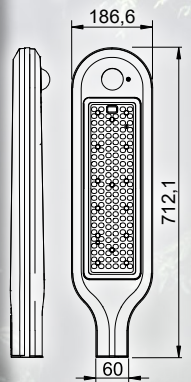
## Sensor mode



Press the  button on the remote control, the light will switch to the default Sensor mode: the device automatically switches on at 100% brightness when it detects movement within ≤15 meters, then switches to 30% brightness when it does not detect any movement within 20 seconds.



The length of cable between the panel and the luminaire: 1 m



The pillar is not an accessory.



Accessory: pole adaptor

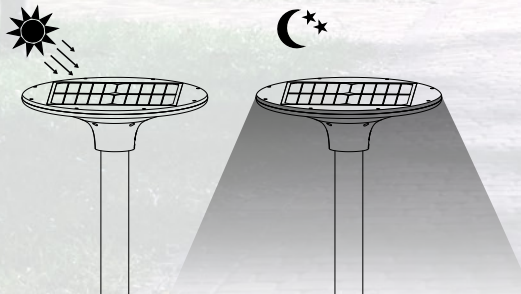


The pillar is not an accessory.

ON/OFF

# LSPL25W - Solar park lighting

## Intelligent operation mode



Press the on/off button to switch the device on and it will work automatically. The lamp will automatically light up at night and operate at 100% brightness for the first 3 hours, 70% brightness for the next 2 hours and then 50% brightness until dawn. Thanks to the intelligent control system, the lamp will automatically adjust the brightness according to the dynamic capacity of the battery.

Rated power <b>20 W</b>	Light intensity <b>2.100 lm</b>
Color temperature <b>4.000 K</b>	L×W×H (mm) <b>400×400×120</b>

